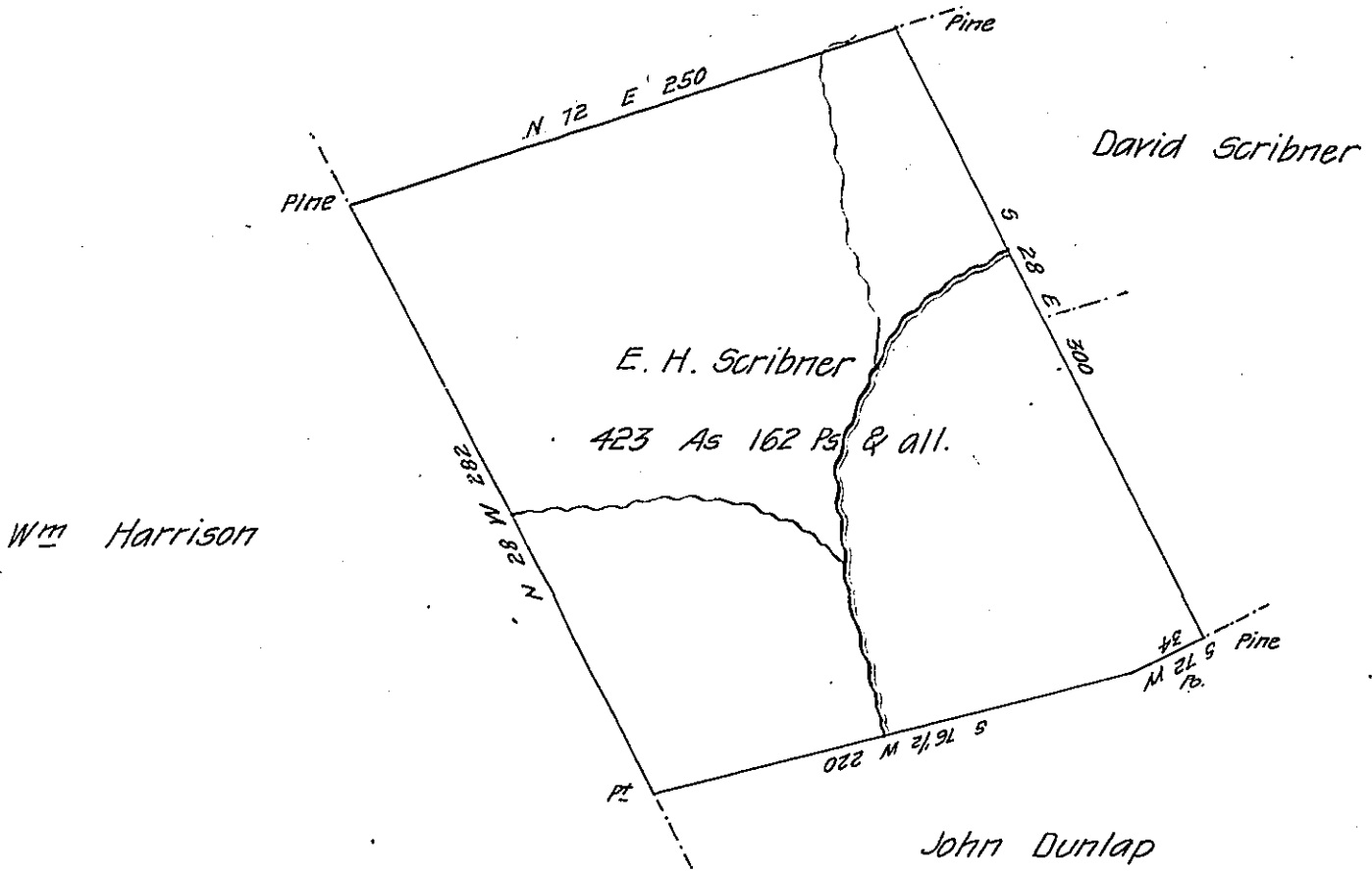


Robt Irwin



Draft of a tract of Land situate part in Hartley township Union County
 and part in Haines township Centre County surveyed the 27th day of September A.D.
 1853 for E. H. Scribner in pursuance of his Warrant dated the 8th day of August 1853
 containing Four hundred and twenty three Acres and One Hundred and sixty two
 perches and the usual allowance of six Pr. Cent for Roads &c.

Robt G. H. Hayes, C.S. U. Co.

To J. Porter Brawley Esq
Surveyor General Pa.

Jacob Bollinger D.S. C. Co.

We do hereby certify that the foregoing is a correct copy of a Survey
 filed amongst the records of the County Surveyors office of the above named Counties
 and been examined by us and found to be correct.

R. F. Brown, C.S. U. Co.

To Jacob M. Campbell
Surveyor General Pa.

Edwin I. Deshler C.S. Centre Co.

IN TESTIMONY that the above is a copy of the original remaining on file in
 the Department of Internal Affairs of Pennsylvania, made
 conformably to an Act of Assembly approved the 16th day of
 February, 1833, I have hereunto set my Hand and caused
 the Seal of said Department to be affixed at Harrisburg,
 this twenty fourth day of January 1907

Asaac N. Brown
 Secretary of Internal Affairs.